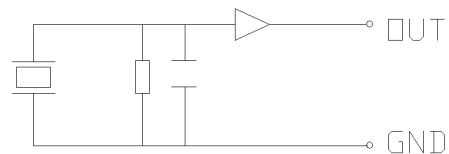
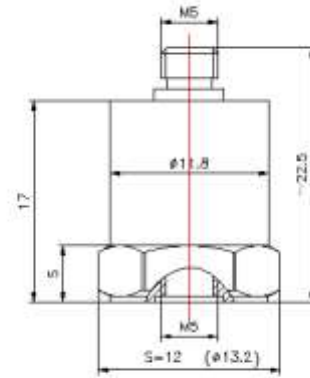


Features:

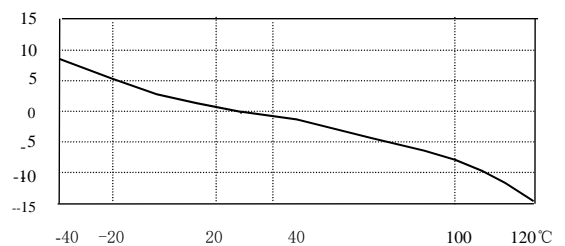
- IEPE, Miniature, Light Weight
- Wide frequency range, wide dynamic range
- Cost-effective general purpose accelerometer
- Top output

Specifications:

Sensitivity (20±5℃)	100 mV/ g
Measurement Range (pk)	50 g
Max Transverse Sensitivity	≤5 %
Frequency Response (±5%)	1~ 10,000 Hz
Mounting Resonant Frequency	~30KHz
Operating Temp. Range	-40~+120 °C
Temperature Response	See Graph
Shock Limit(pk)	3000 g
Max Output Signal(pk)	≤6 V
Transient Temperature Response	10 mg/°C
Magnetic Sensitivity	1.5 g/T
Base Strain Sensitivity	0.2 mg/με
Noise (1~20KHz)	<0.5 mg
Output Impedance	<100 Ω
Operating Voltage(Constant current source)	+18~+28 VDC
Operating Current	+2~+10 mA (typical 4mA)
DC Bias Voltage	12±2 V
Mounting	M5
Sensing Element	Piezoelectric Ceramics
Sensing Geometry	Shear
Case Material	Stainless steel
Weight	11 g
Output	L5
Accessories	
Certificate	Calibration parameters, frequency response
M5 Stud , Protection cap	One
L5/ L5 (2m) STYV-1	One



Temperature Response



Frequency Response

