



SINOCERA



Global Sensor Technology

## Piezoelectric Velocity Transducer (IEPE)

Model: CS-YD-022

### FEATURES

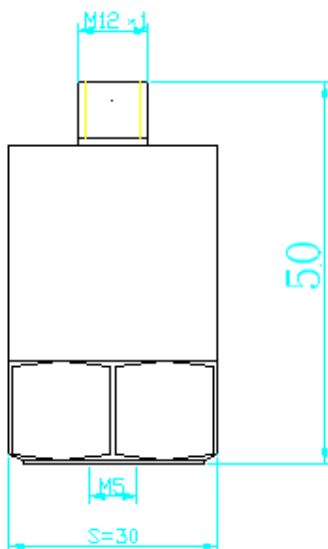
- Built-in piezoelectric accelerometer and for converting acceleration to velocity output by internal precise integrating circuit.
- Wide frequency response, high sensitivity.
- IEPE operating mode.

### SUPPLIED WITH

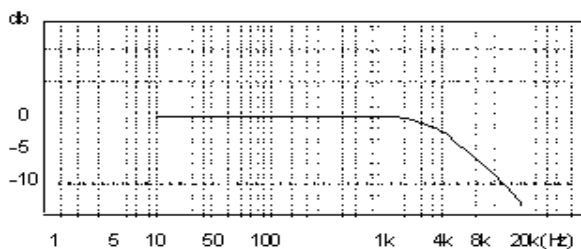
Calibration chart  
2-core shielded cable (3m)



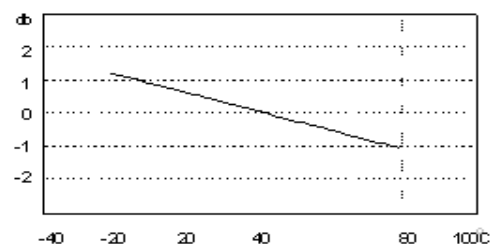
### Technical Specifications:



|                             |                    |
|-----------------------------|--------------------|
| Sensitivity (20±5°C)        | 20mV/mm/s          |
| Measuring Range             | 0-100mm/s          |
| Frequency Range             | 4 to 2000Hz        |
| Transverse sensitivity      | ≤5%                |
| Operating Temperature Range | -10 °C to +70 °C   |
| Dynamic Range               | ±5Vp               |
| Output Impedance            | <100 Ω             |
| Offset Voltage              | 12V±2V             |
| IEPE power supply           | 2-10mA/18 to 28VDC |
| Case Material               | Stainless Steel    |
| Weight                      | 100g               |
| Mounting                    | M5                 |
| Sensing Element             | PZT-5              |
| Output Type                 | TNC socket         |



Typical Frequency Response Curve



Typical Temperature Curve