



SINOCERA



## 3-Component Quartz Force Sensor

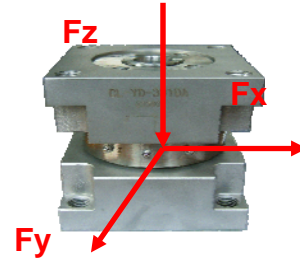
Model: CL-YD-3301

### FEATURES

- Quartz force sensor for measuring the three orthogonal components of a dynamic or quasi-static force acting in an arbitrary direction.
- Accurate measurement independent of the force application point.
- Wide frequency range; compact dimensions; Stainless, sealed sensor case; rugged multi-pole plug connection.
- Suitable for mechanical impedance measurement, modal analysis, vibration control system.

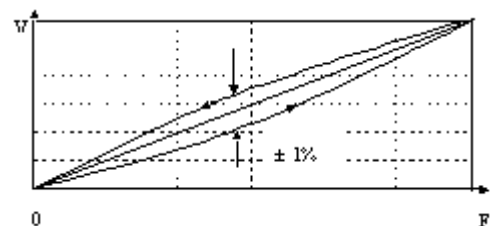
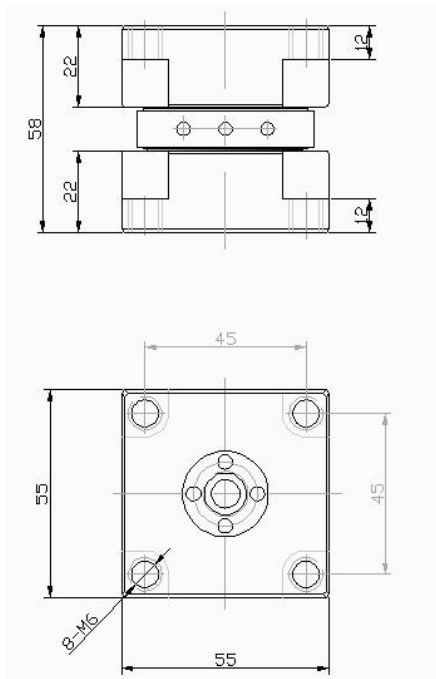
### SUPPLIED WITH

Calibration chart  
Protective cap  
STYV-1 Lower noise cable (2m)



### Technical Specifications:

Sensitivity ( 20±5°C )	3.5pC/N
	7.5pC/N
Calibrated range	±10kN
	±2 kN
Overload	120 %
Linearity,	<1%F·S.
Hysteresis,	<1%F·S
Repeatability	<1%F·S
Capacitance	80pF
Insulation Resistance	>1012Ω
Resonance Frequency	>20kHz
Operating Temperature Range	-40 to +80 °C
Weight	1Kg
Case Material	High Strength Stainless Steel
Mounting	8-M6
Sensing Element	Quartz
Output Type	3 -L5 (Side)



Typical static calibration curve (3 times average)