



SINOCERA



Global Sensor Technology

## IEPE Accelerometer (Small size, High Sensitivity)

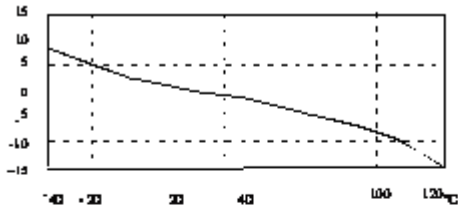
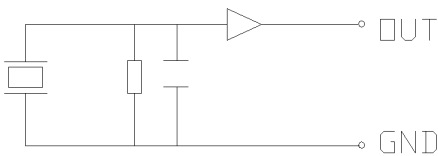
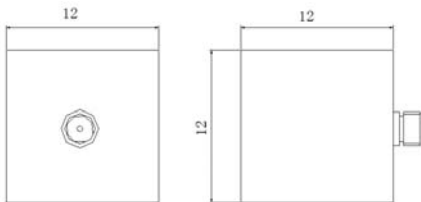
Model: CA-YD-191

### FEATURES

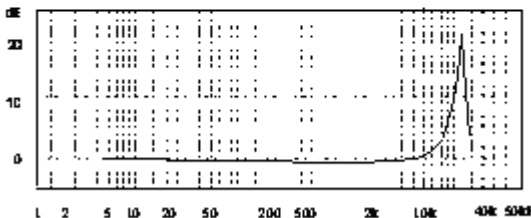
- Built-in IC preamplifier
- Matched with coaxial cable and IEPE Conditioner
- Simplify measurement system
- Small size, High sensitivity

### SUPPLIED WITH

- Calibration chart
- M5 bolt and protective cap
- STYV-1 Double-ended L5 (2m)



Typical Temperature Response



Typical Frequency Response

### Technical Specifications:

Sensitivity (20±5°C)	100mV/g
Measurement Range	50 g
Transverse Sensitivity	≤5 %
Frequency Response(0.5dB)	1 to 7,000 Hz
Mounting Resonance Frequency	40,000 Hz
Polarity	Positive
Operating Temp. Range	-40 to +120 °C
Shock Limit	2,000g
Operating Voltage (constant-current source)	+18 to +28 V(DC)
Operating Current	+2 to +10 mA (typical 4 mA)
Output Signal (peak)	≤6V
Noise (1 to 20kHz)	<0.5 mg
Base Strain Sensitivity	0.2mg/με
Magnetic Sensitivity	1.5g/T
Thermal Transient Sensitivity	10mg/°C
Output Impedance	<100 Ω
DC Offset Voltage	12±2 VDC
Weight	8g
Case Material	Stainless steel
Mounting Method	M5
Sensing Element	PZT-5
Structural Design	Loop shear
Output	L5 (side,10-32 selectable)