



SINOCERA



Global Sensor Technology

## 0.5Hz to 1kHz 100mV/ms<sup>-2</sup> ICPE Accelerometer

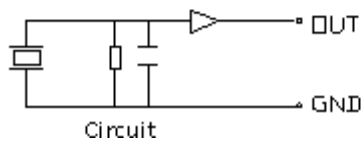
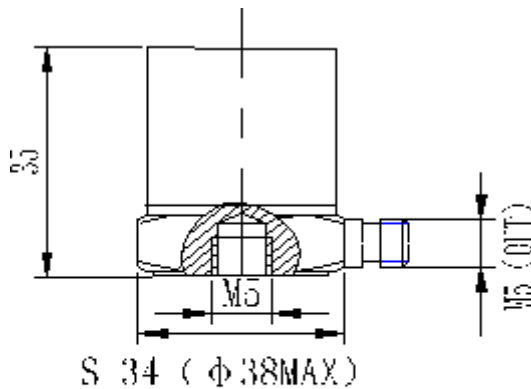
## Model CA-YD-189

### FEATURES

- Internal ICP circuit
- Low output impedance
- Connection with standard coax cable
- Simple measurement system

### SUPPLIED WITH

- Calibration chart
- M5 to M5 stud
- M5 to M8 stud
- Protective cap
- STYV-1 cable, fitted with L5 connectors(2metres)



### PERFORMANCE

Sensitivity (20±5°C)	100mV/ms <sup>-2</sup>
Measurement range	50ms <sup>-2</sup>
Transverse sensitivity	≤5%
Frequency response	see graph below
Frequency range (10%)	0.5Hz to 1kHz
Resonant frequency	5kHz
Temperature response	see graph below
Output phase	in phase with input

### ELECTRICAL CHARACTERISTICS

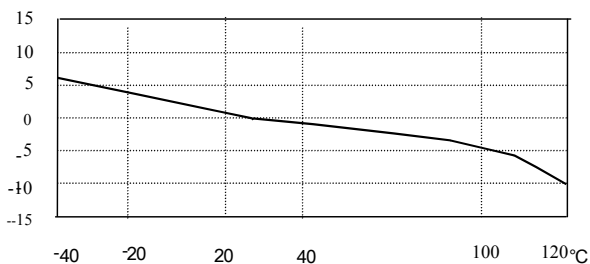
Supply voltage	12V to 28V(DC)
Operating current	2mA to 10mA
Maximum output (peak)	5V
Output impedance	<100Ω
Noise (1Hz to 20 kHz)	<4×10 <sup>-4</sup> ms <sup>-2</sup>
DC offset	7±1V

### ENVIRONMENTAL CHARACTERISTICS

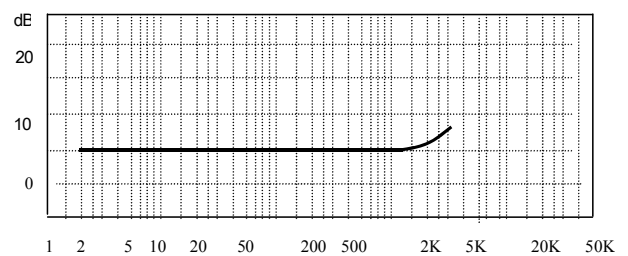
Temperature range	-20°C to 120°C
Shock limit	5,000ms <sup>-2</sup>
Thermal transient sensitivity	8×10 <sup>-4</sup> ms <sup>-2</sup> /°C(0.3Hz)
Magnetic sensitivity	15ms <sup>-2</sup> /T
Base strain sensitivity	2×10 <sup>-3</sup> ms <sup>-2</sup> /με

### PHYSICAL CHARACTERISTICS

Weight	110g
Case material	stainless steel
Mounting	M5 thread
Sensing element	PZT-5
Sensing method	shear
Output connection	L5 side connector



Typical Temperature Response



Typical Frequency Response (Hz)