



SINOCERA



Global Sensor Technology

IEPE Accelerometer (Isolated, Explosion-proof)

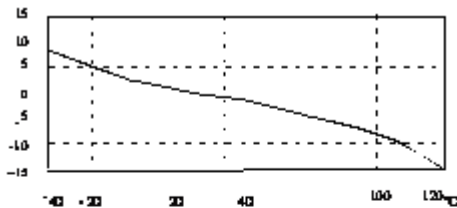
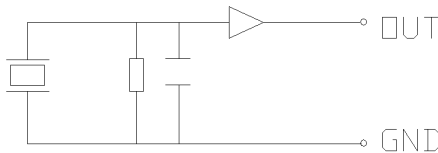
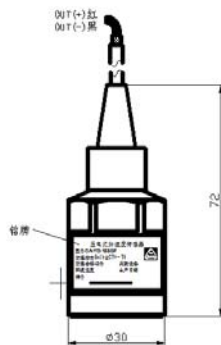
Model: CA-YD-188GF

FEATURES

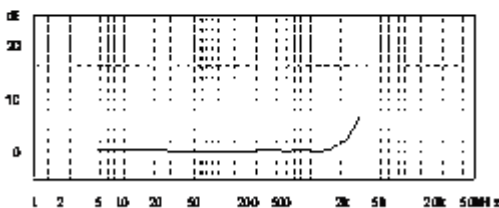
- Built-in IC preamplifier
- Matched with coaxial cable and IEPE conditioner
- Isolated output, Condition Monitor
- Explosion-proof

SUPPLIED WITH

- Calibration chart
- M5 bolt and protective cap
- STYV-1 Double-ended L5 (2m)



Typical Temperature Response



Typical Frequency Response

Technical Specifications:

Axial Sensitivity (20±5°C)	500mV/g
Measurement Range (peak)	10 g
Transverse Sensitivity	≤5 %
Frequency Response (0.5dB)	0.2 to 3,000 Hz
Mounting Resonance Frequency	6,000 Hz
Polarity	Positive
Operating Temp. Range	-40 to +120 °C
Shock Limit	2,000g
Operating Voltage (constant-current source)	+18 to +28 V (DC)
Operating Current	+2 to +10mA (typical 4mA)
Output Signal (peak)	≤6V
Noise	<0.08 mg
Base Strain Sensitivity	0.4mg/με
Magnetic Sensitivity	0.6g/T
Thermal Transient Sensitivity	150mg/°C (0.3Hz)
Output Impedance	<100 Ω
DC Offset Voltage	12±2 VDC
Weight	90g
Case Material	Stainless steel
Mounting Method	M5
Sensing Element	PZT-5
Structural Design	Loop shear
Output	2m Length Cable

Global Sensor Technology (UK) Ltd.

Registered Office, 26 Fairholme Road, Manchester, M20 4NT, UK.

Tel: +44 161 446 4848 | www.globalsensortech.com | sales@globalsensortech.com

VAT Reg. 871973482 | Company No. 07287142