



SINOCERA



Global Sensor Technology

## Piezoelectric Accelerometer (Isolated)

Model: CA-YD-187C

### Features

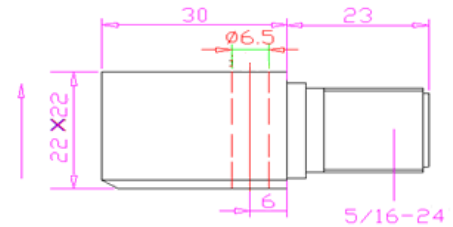
- Built-in IEPE, low noise, strong resistance of disturbance
- Isolated, Floating, industrial site monitoring
- Side 2-pin MIL-C-5015 two-pin socket output



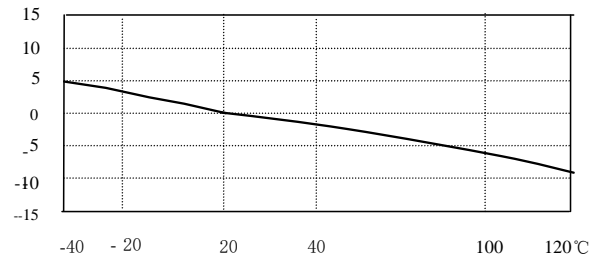
### Main Specifications

Sensitivity (20±5°C)	100 mV/g±5%
Measurement Range (pk)	±50 g
Max Transverse Sensitivity	<5%
Frequency Response (±5%)	1~5000 Hz
Amplitude linearity	≤2%
Operating Temp. Range	-40~+120 °C
Temperature Response	See Graph
Shock Limit (pk)	3000 g
Noise	<40 μV
Output Impedance	<100 Ω
Operating Voltage (Constant current source)	+18~24 VDC
Operating Current	2~10 mA
DC Bias Voltage	12±2 VDC
Case Isolation	≥10 <sup>8</sup> Ω
Mounting	M6 Through Hole
Sensing Element	Piezoelectric Ceramics
Sensing Geometry	Shear
Case Material	316L Stainless steel
Weight	110 g
Output	Side 5/8-24 2-pin Socket
<b>Accessories</b>	
Certificate	Calibration parameters
M6×28 Stud	one
3106A (5015) Plug, Cable (RVVP)	one (3m), one end free

### Dimensions



### Temperature Response



### Frequency Response

