



SINOCERA



Global Sensor Technology

IEPE Accelerometer (Isolated, TNC output)

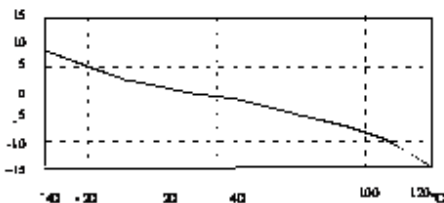
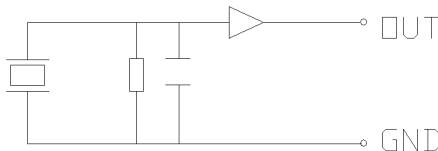
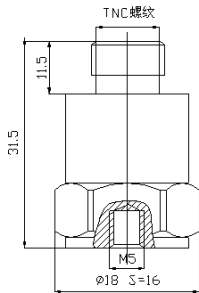
Model: CA-YD-185T

FEATURES

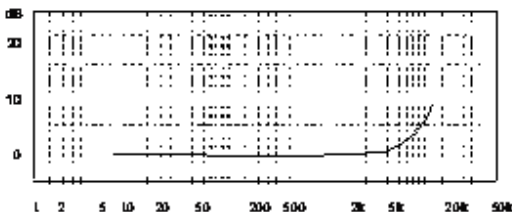
- Built-in IC preamplifier
- Matched with coaxial cable and constant-current adjustor
- Simplify measurement system
- High Sensitivity

SUPPLIED WITH

- Calibration chart
- M5 bolt and protective cap
- STYV-1 Cable (2m)



Typical Temperature Response



Typical Frequency Response

Technical Specifications:

Axial Sensitivity (20±5°C)	50mV/g
Measurement Range (peak)	100 g
Transverse Sensitivity	≤5 %
Frequency Response (0.5dB)	0.5 to 5,000 Hz
Mounting Resonance Frequency	20,000 Hz
Polarity	Positive
Operating Temp. Range	-40 to +120 °C
Shock Limit	3,000g
Operating Voltage (constant-current source)	+18 to +28 V (DC)
Operating Current	+2 to +10mA (typical 4mA)
Output Signal (peak)	≤6V
Noise (1 to 20kHz)	<0.5 mg
Base Strain Sensitivity	0.6mg/με
Magnetic Sensitivity	2g/T
Thermal Transient Sensitivity	0.1mg/°C
Output Impedance	<100 Ω
DC Offset Voltage	12±2 VDC
Weight	25g
Case Material	Stainless steel
Mounting Method	M5
Sensing Element	PZT-5
Structural Design	Shear
Output	TNC