



IEPE Accelerometer (Tri-axial, miniature)

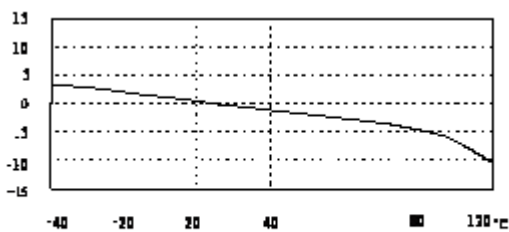
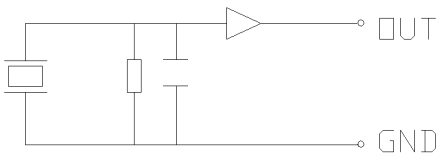
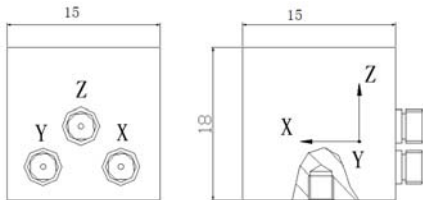
Model: CA-YD-153

FEATURES

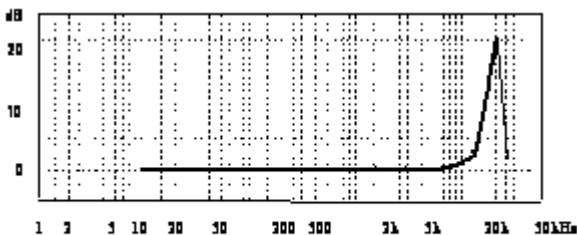
- Internal IEPE circuit
- Low output impedance
- Connection with standard cable
- Simple measurement system

SUPPLIED WITH

- Calibration chart
- M5 stud, protective cap
- STYV-1 low noise cable (2m)



Typical Temperature Response



Typical Frequency Response (Hz)

Technical Specifications:

Sensitivity(20±5°C)	1mV/g±10%
Max. Operational Range(±peak)	5000g
Transverse Sensitivity	≤5 %
Frequency Range(±0.5dB)	1 to 5,000 Hz
Mounting Resonance Frequency	≥15,000 Hz
Operational Temp. Range	-40 to +120 °C
Shock Limit (±peak)	5000g
Operational Voltage	18 to 30 VDC
Operational Constant Current	2-20 mA
Max. Output Amplitude (±peak)	≤8V
Output Noise(1 to 20kHz)	< 2 mg
Output Impedance	< 100 Ω
DC Bias	12±2 V
Weight	20 g
Case Material	LC4
Mounting Method	M5
Sensing Element	PZT-5
Output Connection	L5(10-32 selectable)