



SINOCERA



Global Sensor Technology

IEPE Accelerometer (Small size, high sensitivity)

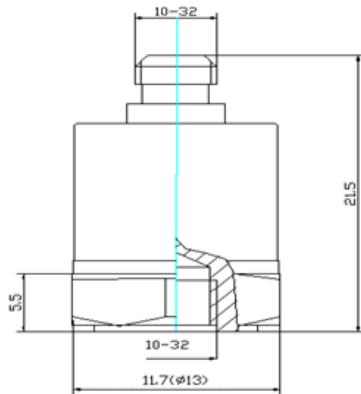
Model: CA-YD-1182

FEATURES

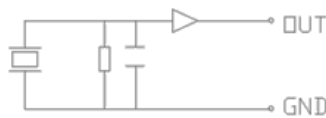
- Built-in IC preamplifier
- Matched with coaxial cable and constant-current adjustor
- Simplify measurement system
- Small scale, high sensitivity

SUPPLIED WITH

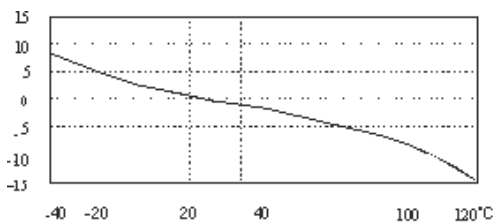
- Calibration chart



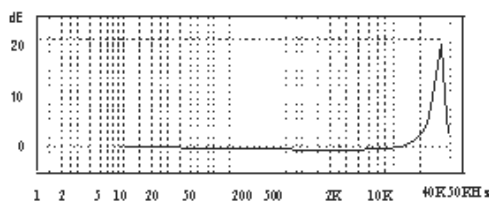
Schematic diagram



Circuit diagram



Temperature Response



Frequency Response Curve

Technical Specifications:

Axial Sensitivity (20±5°C)	100mV/g
Measurement Range (peak)	50g
Transverse Sensitivity	≤5 %
Frequency Response (0.5dB)	0.5to 10,000 Hz
Mounting Resonance Frequency	40,000 Hz
Temperature Response	Refer to the temp. curve
Polarity	Positive
Operating Temp. Range	-40 to +120 °C
Shock Limit (±peak)	3,000g
Operating Voltage (constant-current source)	+18 to +28 V (DC)
Operating Current	+2 to +10 mA (typical 4 mA)
Output Signal (peak)	≤6V
Noise (1 to 20kHz)	< 0.5 mg
Base Strain Sensitivity	0.2mg/με
Magnetic Sensitivity	1.5g/T
Thermal Transient Sensitivity	10mg/°C
Output Impedance	< 100 Ω
DC Offset Voltage	12±2 VDC/7±1 VDC (inform when making orders)
Weight	9g
Case Material	Stainless steel
Mounting Method	M5
Sensing Element	PZT-5
Structural Design	Loop shear
Output Type	L5 (side)

Global Sensor Technology (UK) Ltd.

Registered Office, 26 Fairholme Road, Manchester, M20 4NT, UK.

Tel: +44 161 446 4848 | www.globalsensortech.com | sales@globalsensortech.com

VAT Reg. 871973482 | Company No. 07287142