



SINOCERA



Global Sensor Technology

Variable Capacitance Accelerometer (Tri-axial)

Model: CA-DR-3001

FEATURES

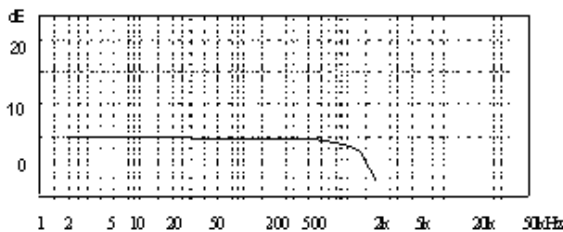
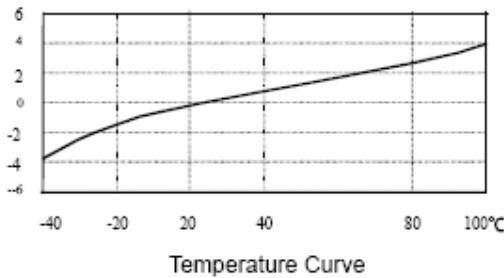
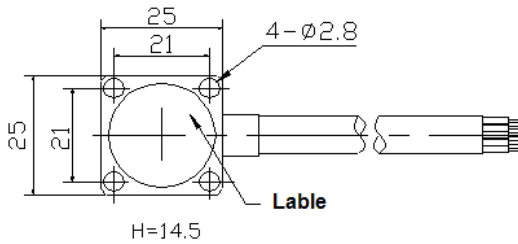
- Based on differential capacitance
- Wide frequency response from DC to 400Hz
- Tri-axial output (X, Y, Z)



SUPPLIED WITH

- Calibration chart
- Four M2.5×20 screws
- 3 core integral shielded cable (x2m)

Technical Specifications:



Typical Frequency response

Sensitivity (at 20°±5C)	100±10% mV/ m/s ² (X, Y, Z)
Measurement range (pk)	±10 m/s ²
Transverse sensitivity	≤5 %
Non-linearity	≤0.5%
Frequency response see graph below	DC to 400 Hz
Mounted resonance	5,500Hz
Temperature range	-40 to +85 °C
Temperature sensitivity	0.1 mV/°C
Shock Limit (No Supply)	±5000 m/s ²
Power Supply	+6 to +16 VDC
Operating Current	≤3mA
Offset Voltage (0 g)	2.5±0.1VDC
Noise (100Hz)	< 2.25mVrms
Output impedance	< 100 Ω
Weight	30 g
Case material	Aluminum- Alloy
Mounting	4-Φ2.5 hole
Output Cable	2m integral 5 core cable: Red: Power Supply; White: Ground; Yellow: X-axial output; Blue: Y-axial output; Green: Z-axial output
Accessories	
Calibration Chart	one
M2.5×20 Screw	4